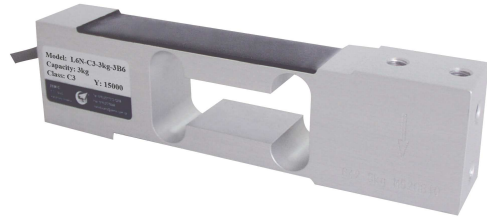


Capacity	Accuracy	Part-Number
3kg	C3 & C4	L6N-Cx-3kg-3B6
5kg	C3 & C4	L6N-Cx-5kg-3B6
8kg	C3 & C4	L6N-Cx-8kg-3B6
10kg	C3 & C4	L6N-Cx-10kg-3B6
15kg	C3 & C4	L6N-Cx-15kg-3B6
20kg	C3 & C4	L6N-Cx-20kg-3B6
30kg	C3 & C4	L6N-Cx-30kg-3B6
50kg	C3 & C4	L6N-Cx-50kg-3B6
75kg	C3 & C4	L6N-Cx-75kg-3B6
100kg	C3 & C4	L6N-Cx-100kg-3B6



- Aluminium-Alloy IP65 single point Load Cell.
- Colorless anodized
- Suitable for pricing scales, bench scales, etc.
- Recommended platform size: 400x400mm

Specification:

Accuracy class		OIML R60 C3	OIML R60 C4
Output sensitivity	mV/V	2.0 ± 0.2	
Maximum capacity (Emax)	kg	3, 5, 8, 10, 15, 20, 30, 50, 75, 100	3, 5, 8, 10, 15, 20, 30, 50, 75, 100
Maximum number of load cell intervals (n _{LC})		3000	4000
Ratio of minimum LC verification interval (Y = Emax / Vmin)	Emax	12000	20000
Minimum Dead Load Output Return (Z = Emax / 2 * DR)	Emax	4000	
Combined Error	%FS	± 0.0230	± 0.0200
Minimum dead load	kg	0	
Safe overload	of Emax	150 %	
Zero balance	of Emax	< ± 1.0 %	
Excitation, recommended voltage	V	5 ~ 12 DC	
Excitation maximum	V	18 DC	
Terminal resistance, input	Ω	409 ± 6	
Terminal resistance, output	Ω	350 ± 3	
Insulation impedance	MΩ	≥5000 (50VDC)	
Temperature range, compensated	°C	-10 ~ +40	
Temperature range, operating	°C	-35 ~ +65	
Element material		Aluminium	
Protection class		IP65	
Standard Cable Length (6 wire)	m	3	

Connections: **Red** Input(+) **Black** Input(-) **Green** Output(+) **White** Output(-)
 Blue Sense(+) **Brown** Sense(-) **Transparence** (Shield)

Outline Dimensions in mm

